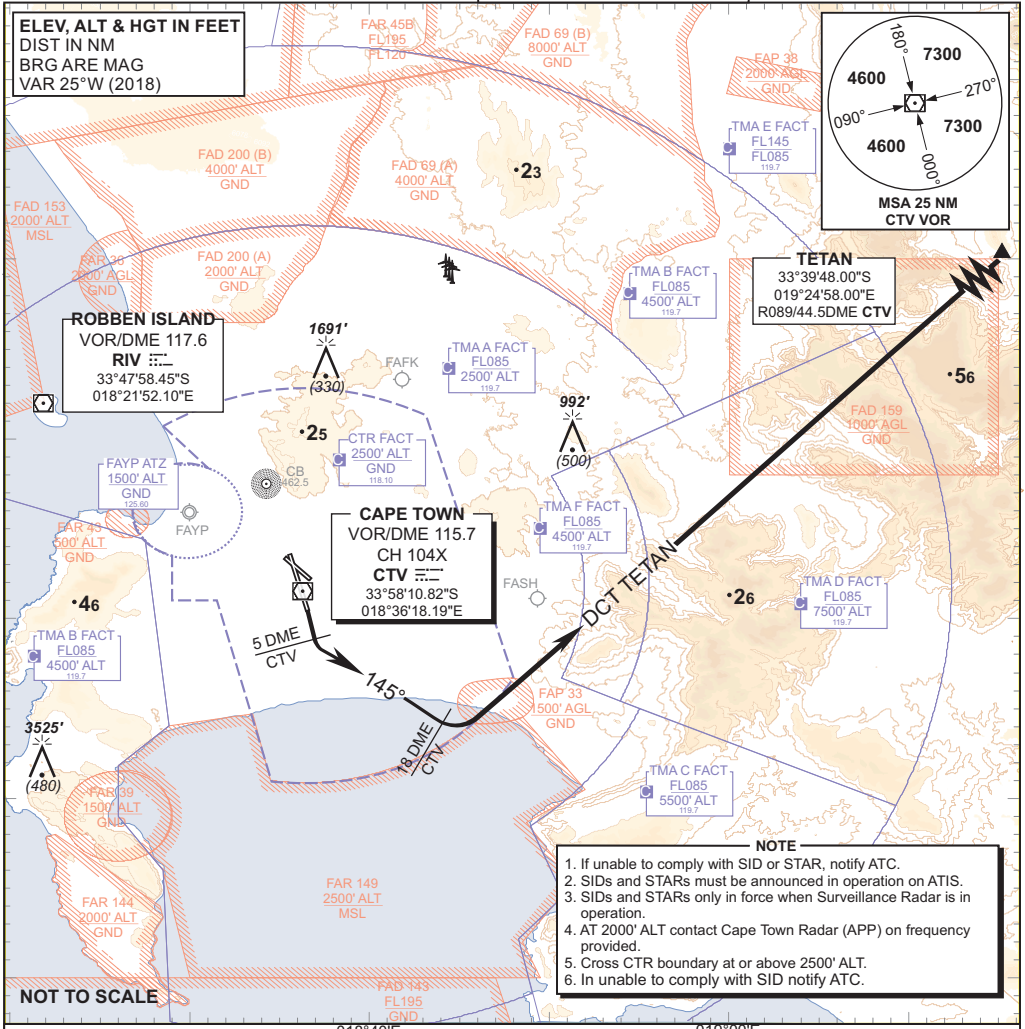


STANDARD DEPARTURE CHART - INSTRUMENT (SID)

TRANSITIONAL ALTITUDE
7500'
 TRANSITIONAL LEVEL
ATC

APP 119.70
 TWR 118.10
 ATIS 127.00

CAPE TOWN INTL RWY 19 TETAN 1A



APP Frequency changed only
 CHANGE: No other changes were performed

<p>TETAN 1A, RWY 19</p>	<p>Climb to FL090, maintain RWY track to 5DME CTV then turn left to track 145°. Passing 18DME CTV turn left direct TETAN. Further climb will be under radar control. At TETAN set course as per flight plan.</p> <p>Restricted to a minimum climb gradient of 6.2% until passing FL085 due to terrain. Do not cross North of R140 CTV below FL085. 6.2% @ 140KT IAS = 880 FPM 6.2% @ 180KT IAS = 1130 FPM 6.2% @ 220KT IAS = 1381 FPM</p> <p>COMMUNICATION FAILURE PROCEDURE (Squawk 7600)</p> <p>Comply with the TETAN 1A SID, maintain last assigned level. Crossing R105 CTV climb to flight plan level. At TETAN set course as per flight plan.</p> <p>Aircraft wishing to return must continue to SID termination point and then route direct ERDAS and comply with the appropriate ERDAS STAR Communication Failure procedure.</p>
--------------------------------	---